

PORTFOLIO

SELECTED ARTWORKS

Nedim Đikić

[www.artdjikic.com](http://www.artdjikic.com)

[nedim@djikic.com](mailto:nedim@djikic.com)

# ARTIST STATEMENT

My artwork has critical view of the illusion of freedom in the contemporary world in which we are bound by rules of religion, ideology and society. Human psychology, complex relationships, social issues, materialism and socially engaged art in general,are fundamental tools often used as the basis for the creation of the most of my artwork.

Throughout my experience and years of experimenting with sculpture I came up with an idea on exploring the voids and hollows of the sculpture as its fourth dimension. Integration of light in the sculpture led me to making series of works which border fine and applied art, and at the same time they also became design products.

Through abstract painting I experiment and analyze my own and observer’s specific psychological states and emotions.

Experimenting helped me to gain the skill to master all new materials very quickly, but it also encouraged me to deal with unknown areas, especially with new, unorthodox materials and techniques.

# CONTENT

Fine art	.....3-22
The Making of...	.....23-27
Applied art	.....28-33
Flames project	.....34-37



Prisoner of his mind (iron; polyester)

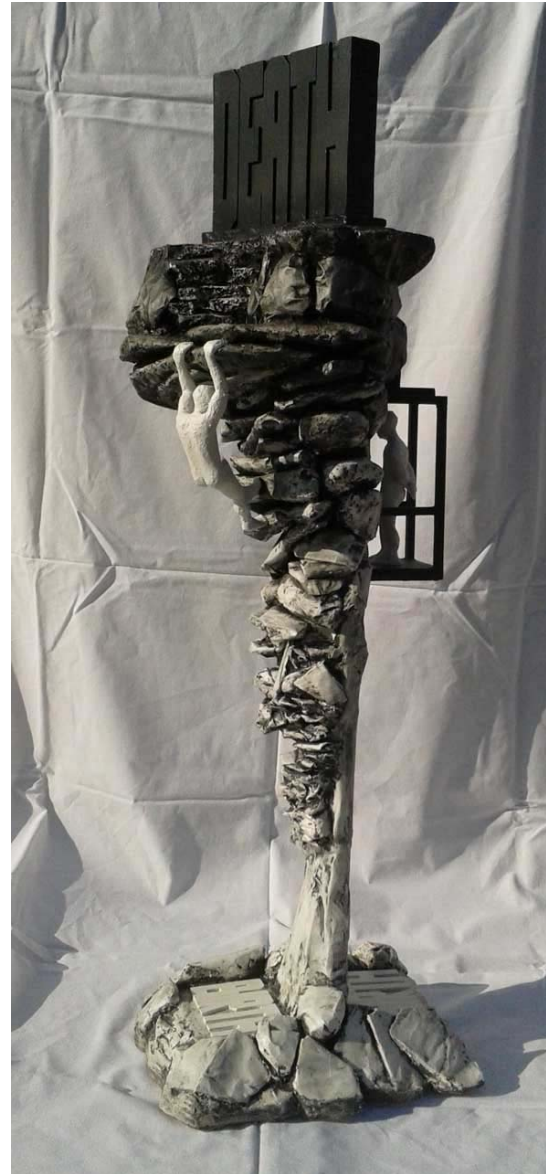


We all pull to our side (plastic)





Freedom (iron; paper pulp)



The only path (comb. technique)



LIFE... (comb. technique)

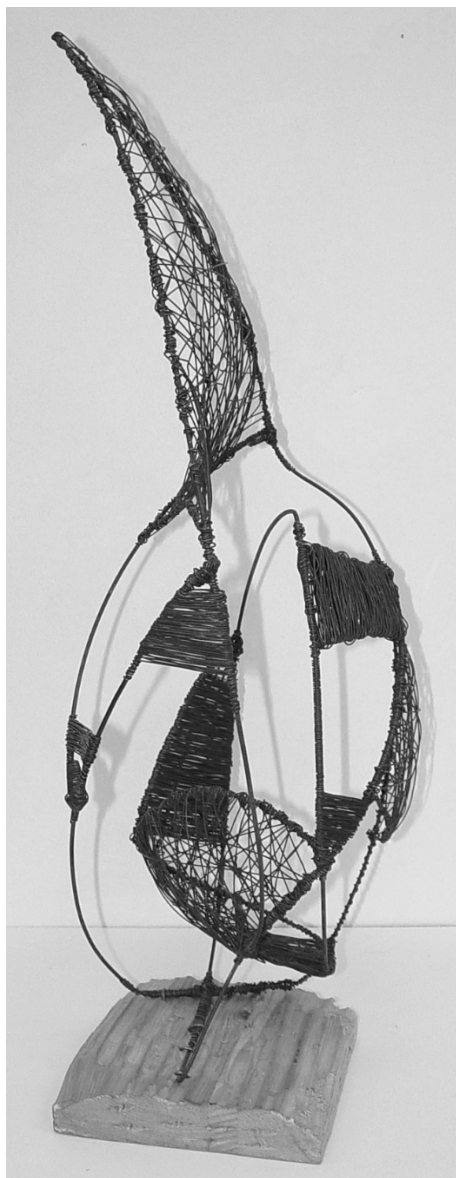


## SCULPTURE **INSIDE OUT**

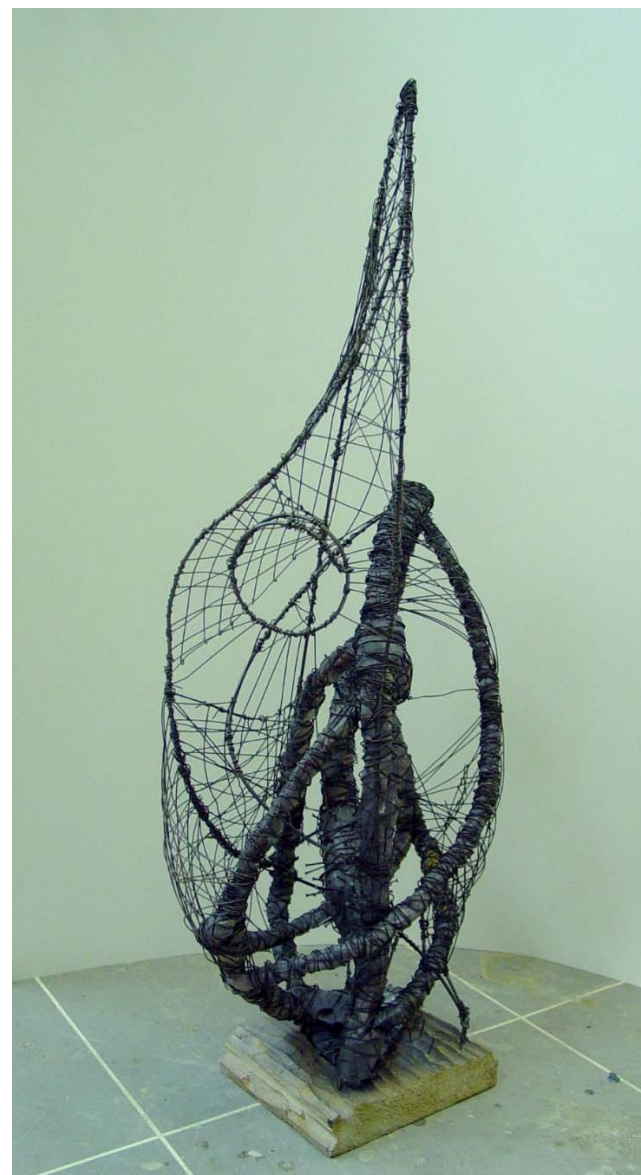


JAVA gallery, Sarajevo, BiH, 2013 (solo exhibition - detail)

# ABSTRACT SCULPTURE



Construction no2 (wire)



Construction no3 (wire)





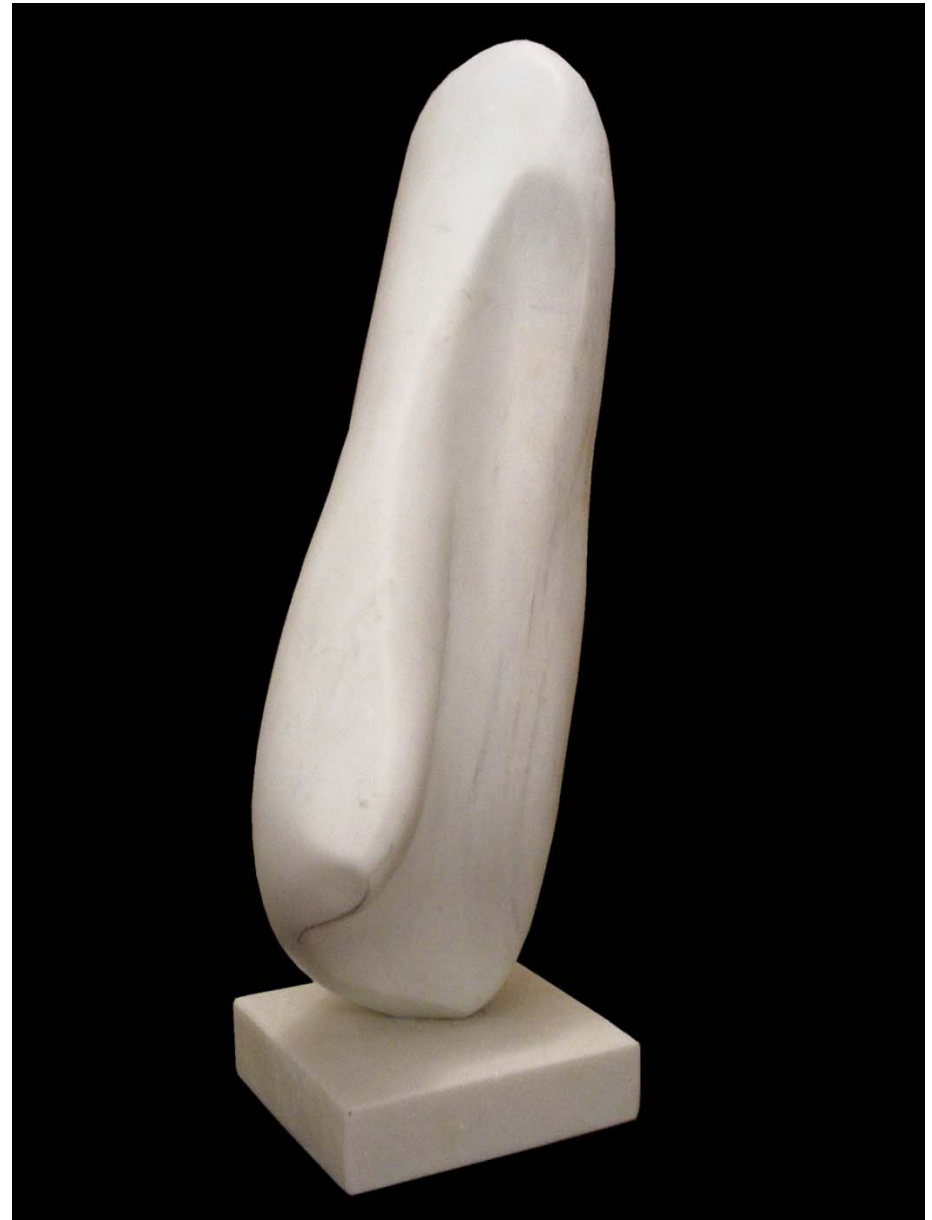
Domination no2 (plaster)



Domination no2 (plaster)



Space egg (papier-mache)



No name (marble)



"Mad Maja" (clay; real size)



"Young man" (clay; real size)





"Sad woman" (clay; real size)

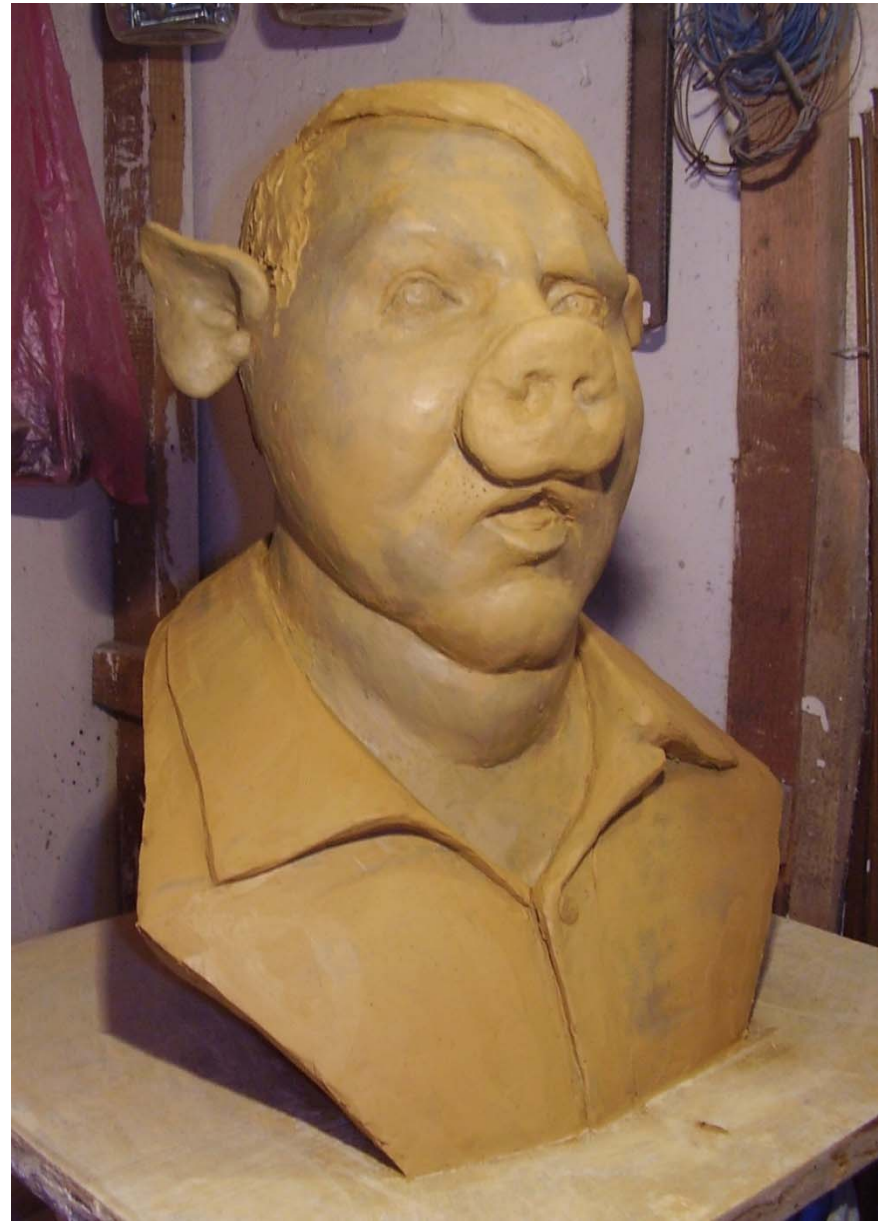


"Mile junky" (clay; real size)



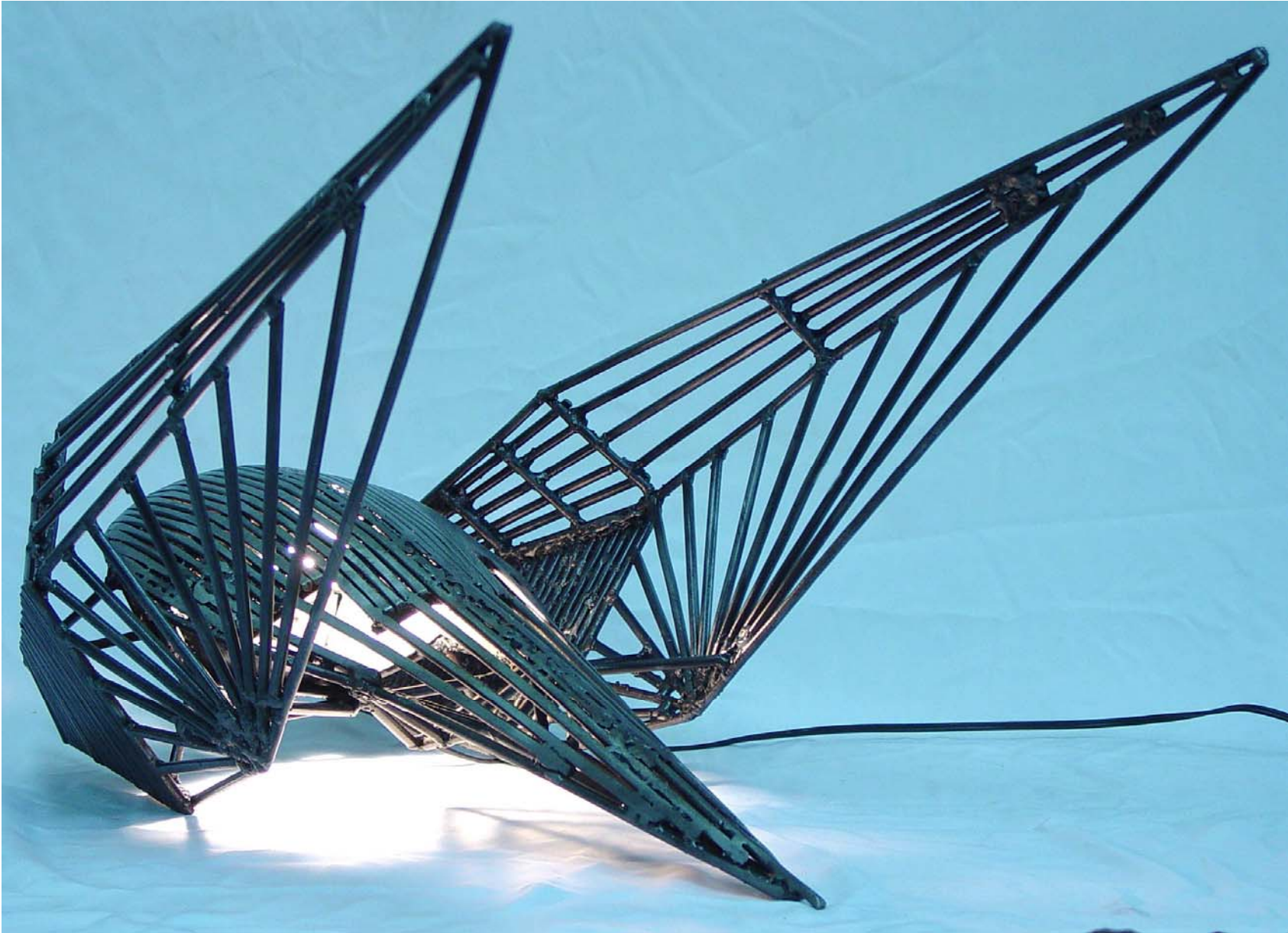


Soul carers (clay; height: cca 45 cm)



The man with the pig face (clay; height: cca 45 cm)

## SCULPTURE WITH LIGHT



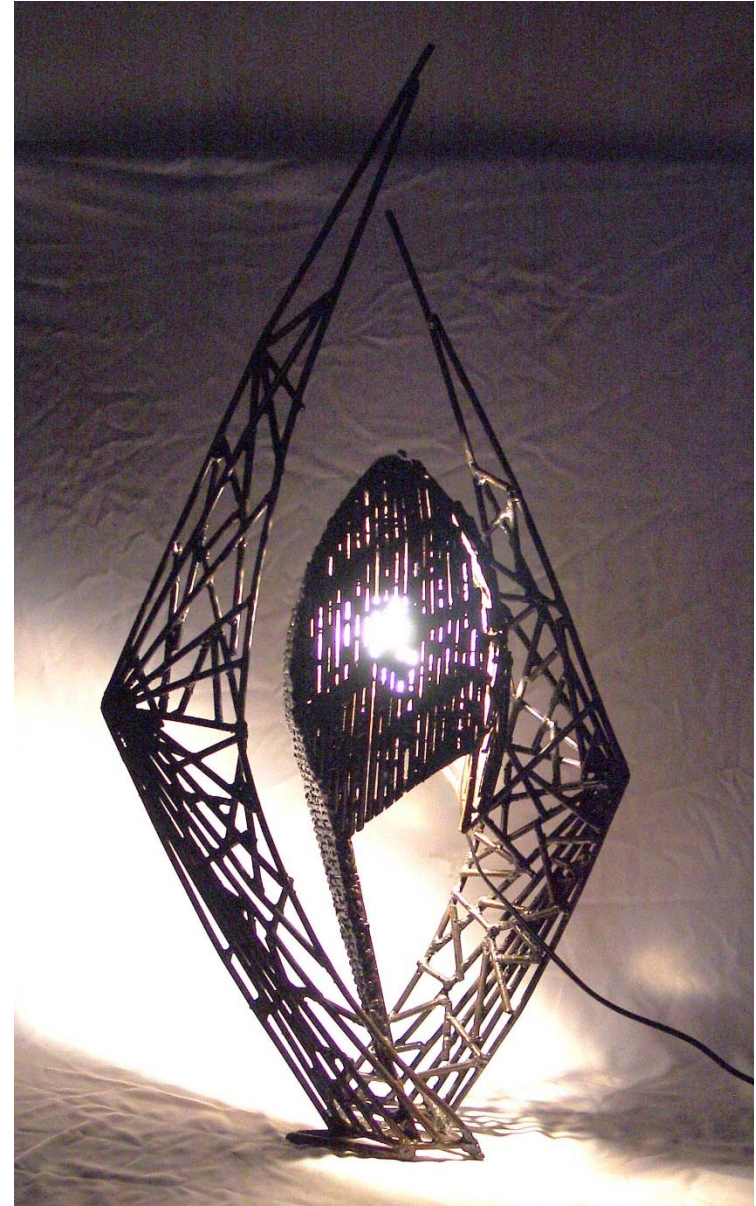
TF - sp (iron; width: 65cm)



## SCULPTURE WITH LIGHT



WF- c1 (iron; height: 110cm)



E-G-G (iron; height: 70cm)





Mask (iron; width: 150cm)





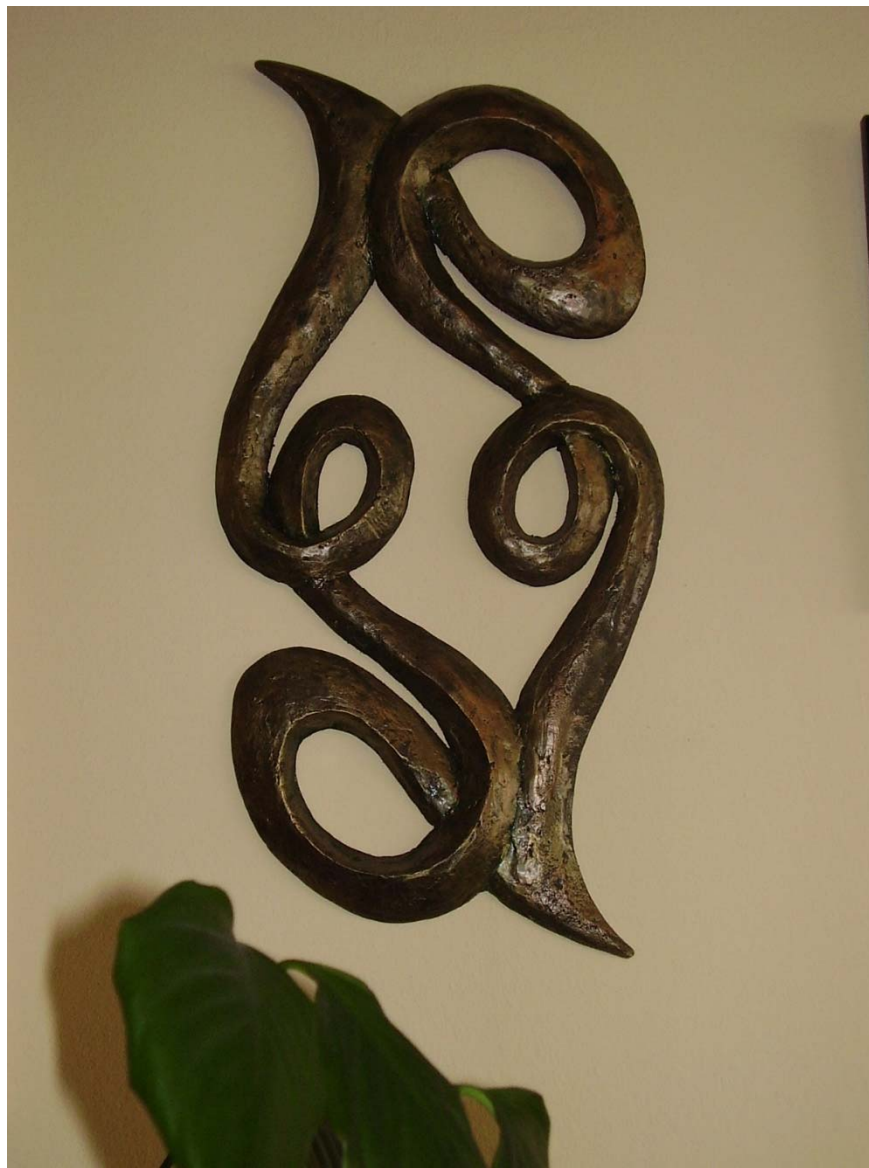
Angel (plaster; 20x30cm)



Organic abstraction shape (sketch)



Organic abstraction shape (paper pulp)



3D ornament (paper pulp; 50x25cm)



# RELIEFS, DRAWINGS, PAINTINGS

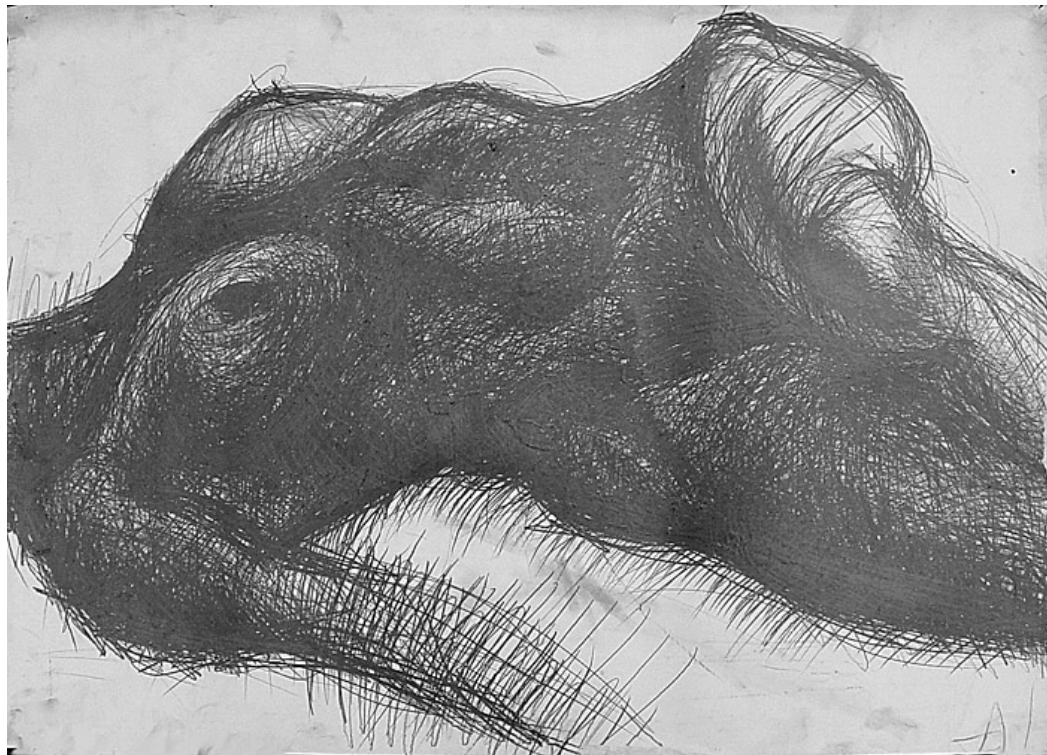


Muskulos (charcoal; height: 90cm)



Nude (pastel; 50x70cm)





Nude (graphite; 100x70cm)



Nude (pastel; 100x70cm)

## RELIEFS, DRAWINGS, PAINTINGS



Street (oil color; height: 30cm)



Distrbance No.9 (33x47cm - with frame)



# THE MAKING OF...

clay model, plaster mold and polyester casting



clay model



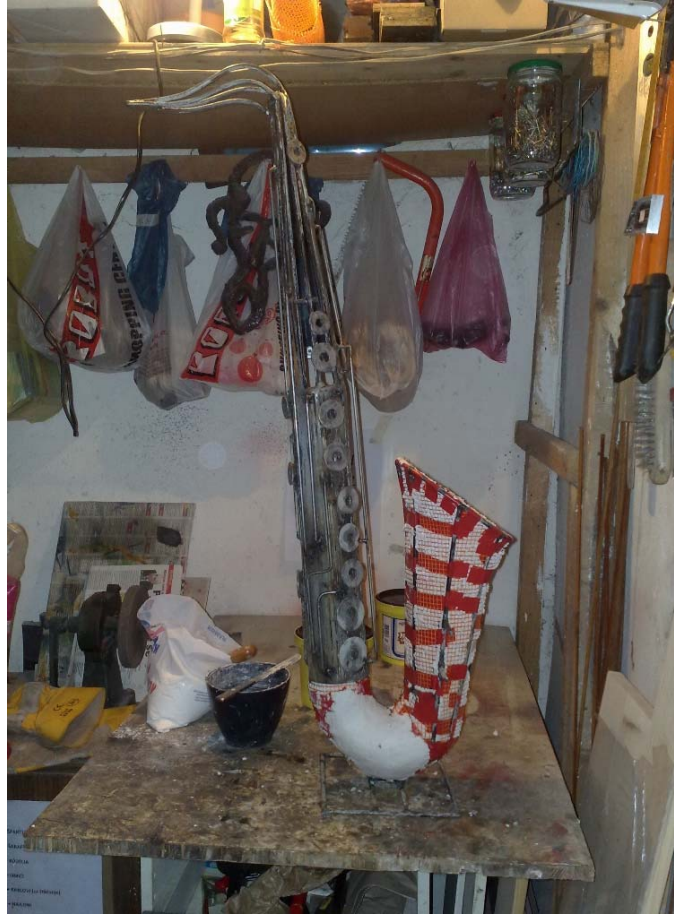
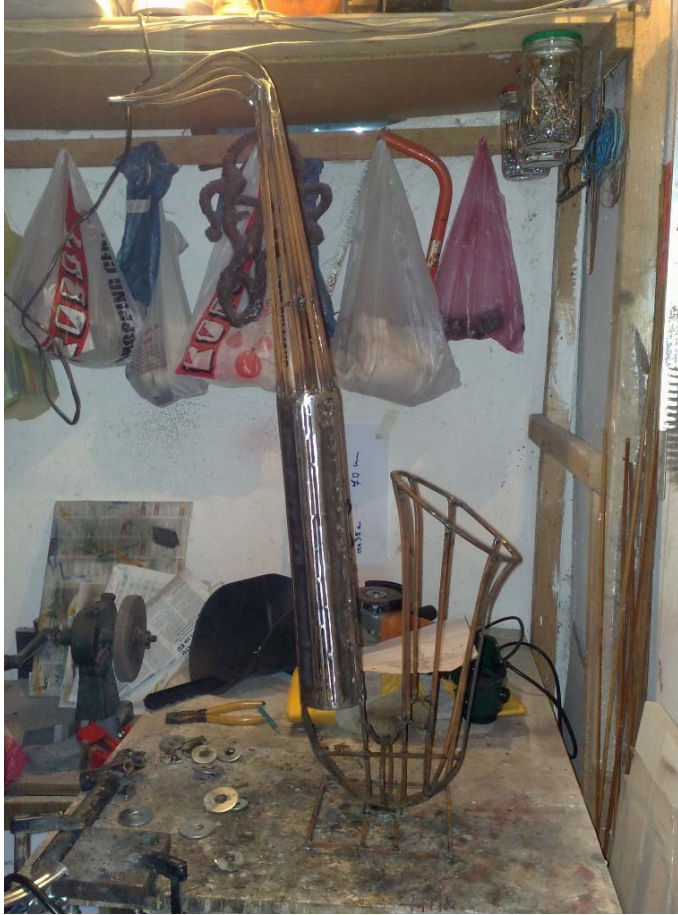
plaster mold



polyester casting



# THE MAKING OF... welding





# THE MAKING OF... from mold to positive cast





# THE MAKING OF... from rubber mold...





# THE MAKING OF... ...to positive cast







Lamp (paper pulp; height 50cm)



Lamp (wire; height 70cm)



Lamp (paper pulp, wire, linen; height cca 50cm)



## APPLIED ART LAMPS, UNIQUE DESIGN



Lamp (paper pulp, iron; height: 75cm)



Lamp (paper pulp; height: 70cm)



Saxophone Lamp (paper pulp, iron; height: 90cm)



## APPLIED ART LAMPS, concept of adapted Bosnian houses



AB Gallery, Maglaj, BiH (solo exhibition - detail)

## APPLIED ART LAMPS, concept of adapted Bosnian houses



Lamp house (paper pulp; height: 31cm)



Lamp house (paper pulp; height: 30cm)



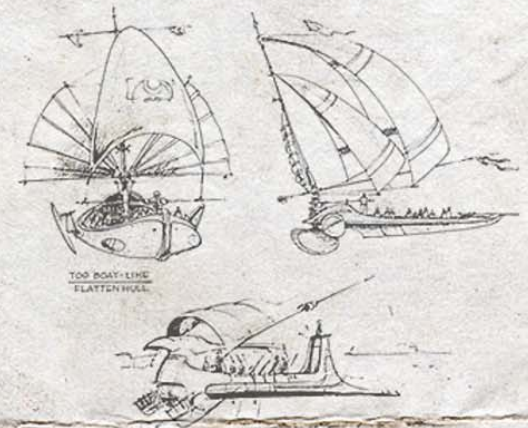
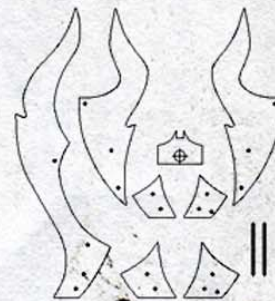
# flamis

*In the sunset, when the open sea is lightened by the last sun rays, the sails shine like bursting flames.*

*They shine in the obscurity, giving the unique sensation of warmth which everyone and every home needs. That provided the inspiration for Flamis lamps (Flaming Sail), the lamps whose form is the sail and the light is their essence.*

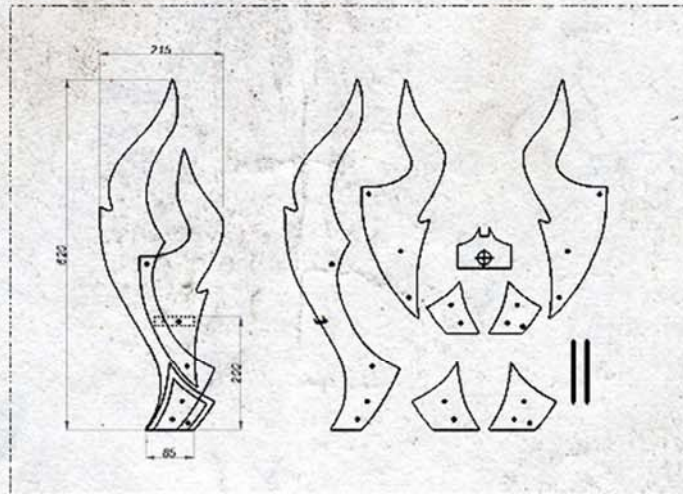
© 2013 - Nedim Đikić  
All Rights Reserved  
www.artdjikic.com  
nedim@djikic.com

Đikić 13





*flamis lamps*



FLAMING SAIL - TYPE A



TYPE A - RED  
MDF BOARD  
WOOD CONNECTING BARS



TYPE A - RED  
MDF BOARD  
WOOD CONNECTING BARS



TYPE A - WHITE  
SOLID WOOD  
STEEL CONNECTING BARS



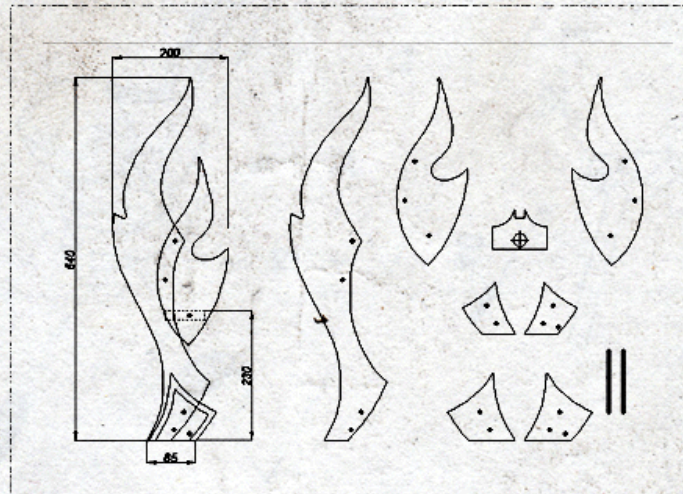
TYPE A - WHITE  
SOLID WOOD  
STEEL CONNECTING BARS

© 2013 - Nedim Đikić - All Rights Reserved  
www.artdjikic.com - nedim@djikic.com





*flamis lamps*



FLAMING SAIL - TYPE B



TYPE B  
SOLID WOOD  
WOOD CONNECTING BARS



TYPE B  
SOLID WOOD  
WOOD CONNECTING BARS



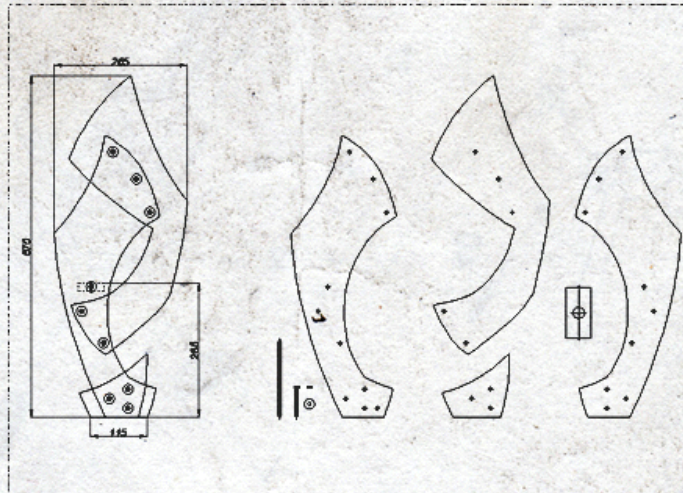
TYPE B  
SOLID WOOD  
WOOD CONNECTING BARS

© 2013 - Nedim Đikić - All Rights Reserved  
www.artdjikic.com - nedim@djikic.com





*flamis lamps*



FLAMING SAIL - TYPE C



TYPE C  
SOLID WOOD  
STEEL CONNECTING BARS



TYPE C  
SOLID WOOD  
STEEL CONNECTING BARS



TYPE C  
SOLID WOOD  
STEEL CONNECTING BARS

© 2013 - Nedim Đikić - All Rights Reserved  
www.artdjikic.com - nedim@djikic.com

